

Don Young Port of Alaska Modernization Program

User Group Update – June 24, 2026



Agenda

1. Terminal 1 Construction Update
2. Electrical Substation
3. North Extension Helipad Project
4. T2 Design
5. Upcoming meetings



Terminal 1 Construction Update

- Temporary piles are being installed now to support the pile driving templates.
- Deep Soil Mixing (DSM) continues on Trestle 1A
- Demolition of existing Terminal 1 structure ongoing
- Piling and precast deck elements will be offloaded and stored at the North Extension throughout the summer



Pile Driving Begins Mid-July



- Temporary pile installation used for the pile driving templates has begun.
- Permanent piles are planned to be installed in mid-July.
- Piles and then decking will be installed north to south.

Large Pile Driving Activities

- Installation of temporary piles used to secure pile driving templates has begun. These piles are being installed with a vibratory hammer.
- Permanent piles are planned to start being installed in the next month. These piles will be installed with an impact hammer.
- The impact hammer noise will be much louder than the vibratory hammer.
- Pile driving is limited to Monday through Saturday, 7am to 10pm.

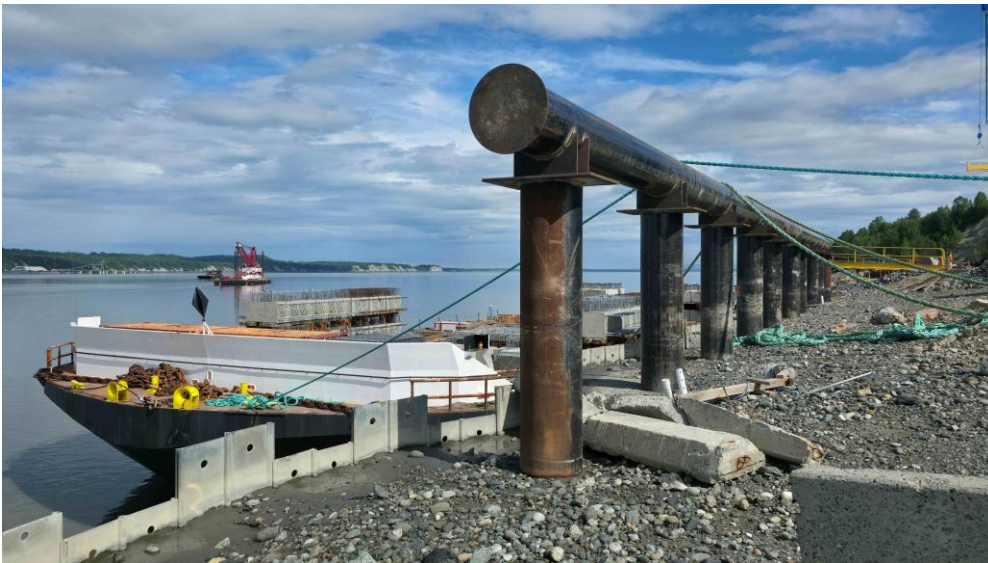


72" Piles in Storage at the North Extension Laydown Yard

- Shuttle lifts are used to transport the piles into their storage location.
- The gray coated piles are permanent piles, the non-coated piles in the background are temporary piles.



Precast Deck Elements

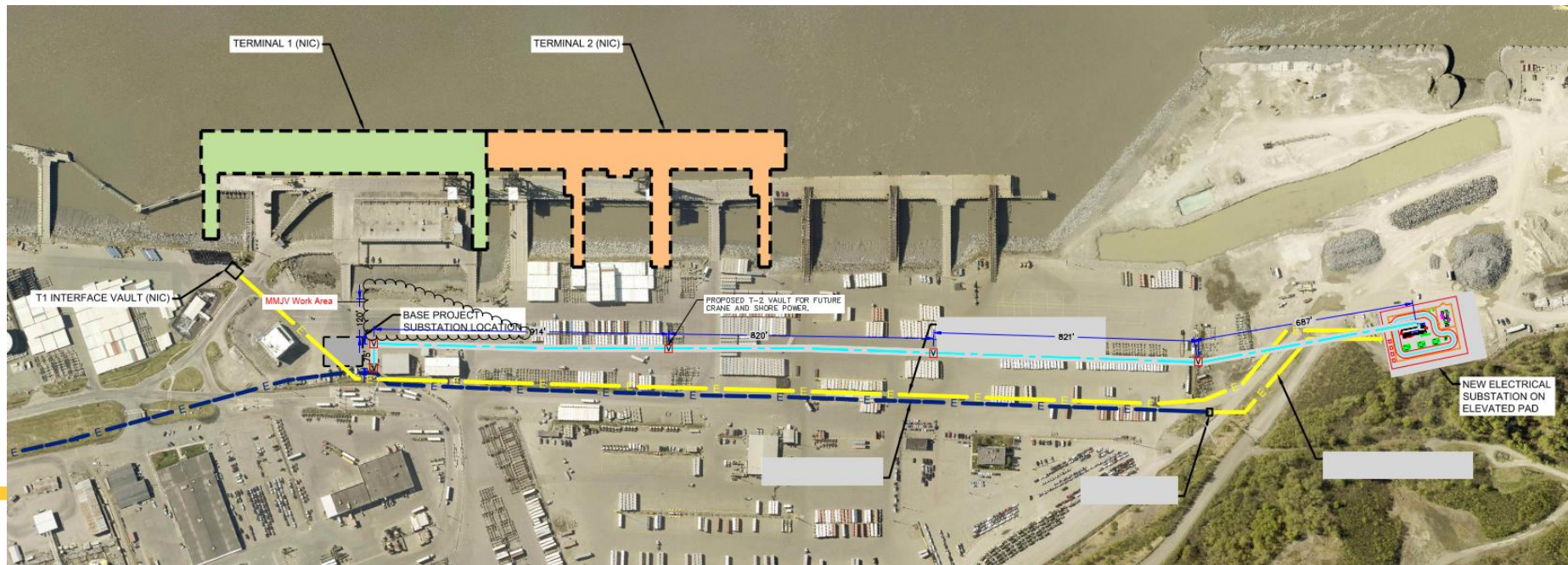


- Precast deck elements and pile plugs arrived from Washington. 5 barge loads of precast deck elements will be needed for the project. 2 loads will arrive this year.
- The pre-cast elements are getting offloaded at the North Extension Berthing Facility and stored at the North Extension Laydown yard. Shuttle lifts transport them into place in the yard.



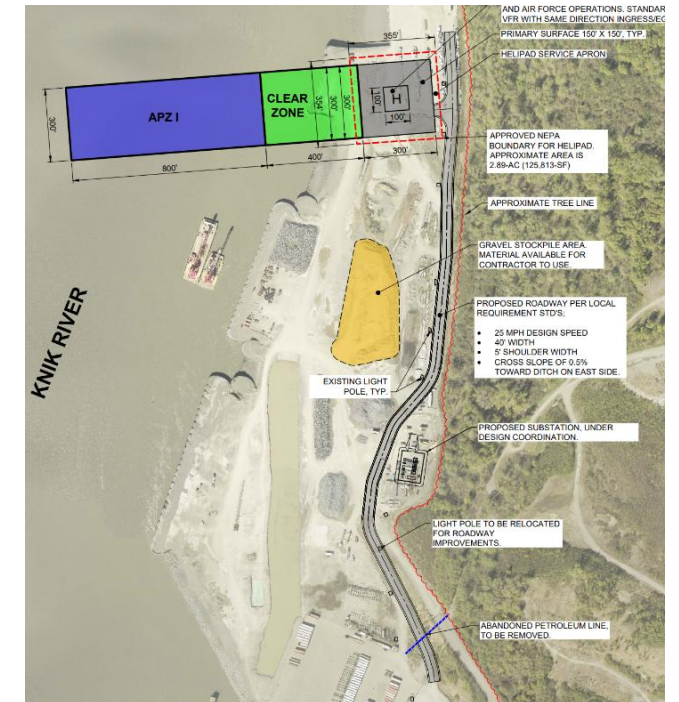
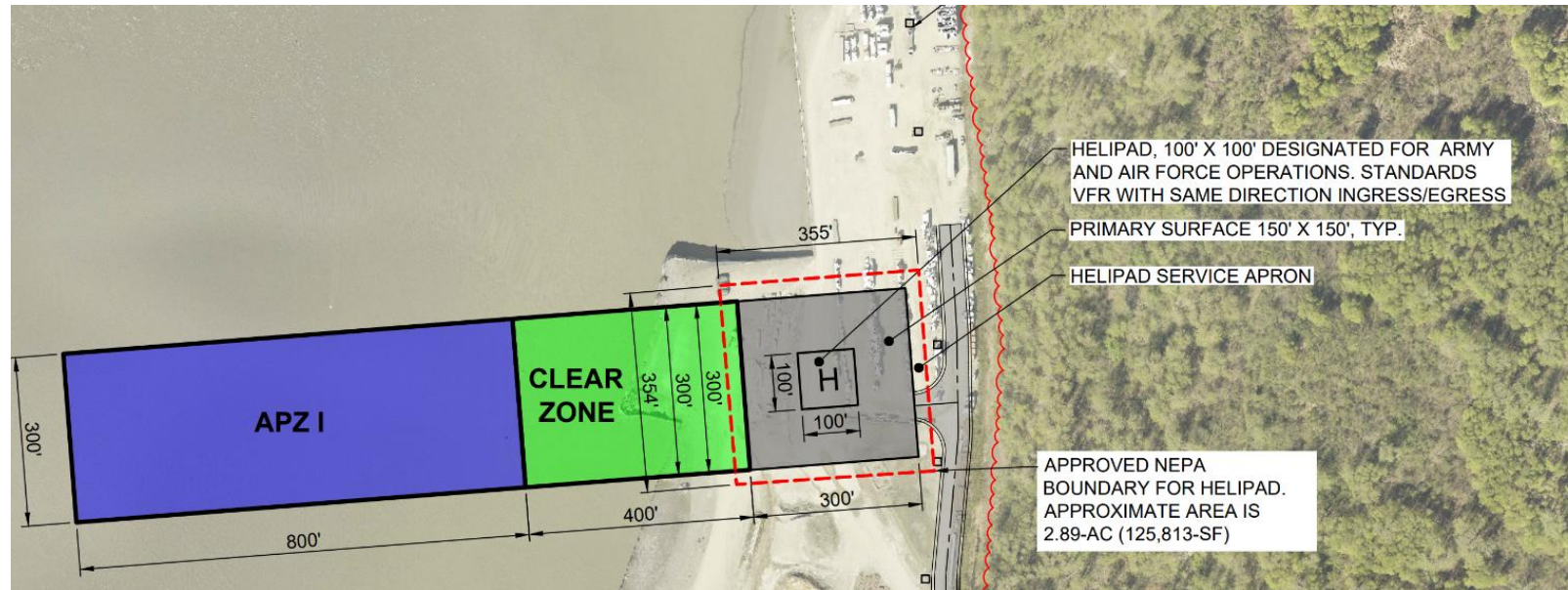
Electrical Substation Project - North Extension Location

- Alignment of the duct bank has shifted to the west to avoid the extensive buried utilities along Tidewater Road.
- Working through an aggressive design schedule to be able to construct this year. 65% design submitted yesterday for review.
- Substation foundation and duct bank construction planned for later this summer.



North Extension Helipad Project

- Request for Proposals is currently advertised on the MOA Procurement website.
- Construction will most likely be in 2027.



Terminal 2 Design

- Working towards 35% design due at the end of September.
- Stakeholder review effort planned for September.
- Specifically looking at construction phasing to minimize disruption to operations.
- Special studies to help solve the issue of fuel berths availability during future Petroleum Terminal construction.



Upcoming meetings

- PAB meeting July 7
 - Discussions on new T1 Stevedore building-ongoing
- IEUOC meeting June 18
 - Overall PAMP update
 - Upcoming POA projects



A photograph of a port at dusk. A large ship is docked at a pier, with several cranes visible on its deck. The sky is a mix of purple, pink, and blue, and the water reflects the lights from the pier and the ship. The text "Thank you" is overlaid in the center of the image.

Thank you