

# Don Young Port of Alaska Modernization Program



Weekly User Group Update – April 2, 2026

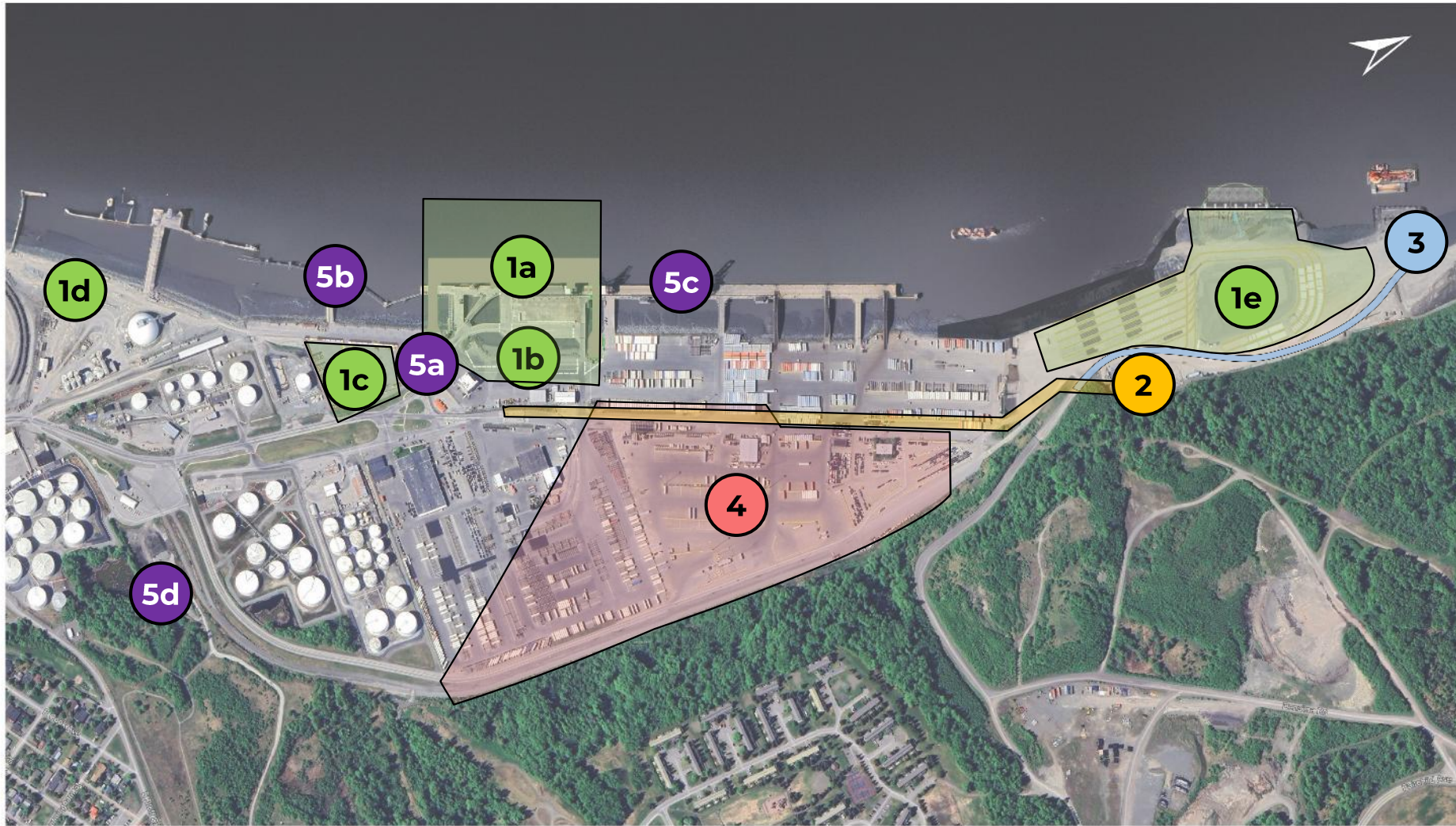


# Safety Moment

- Cargo Terminal 1 contractor has worked 339 days worked safe.
- Pay particular attention when around open excavation areas in front of existing POL1 area. These excavation areas are tidally influenced which causes variable conditions.



# 2026 POA Construction Projects



- 1 PAMP Terminal 1**
  - a. Terminal 1 construction area
  - b. Landside work
  - c. Contractor work trailers
  - d. Contractor parking and washout station
  - e. North Extension Material off-loading and storage
- 2 PAMP Electrical Substation**
- 3 PAMP Helipad**
- 4 POA Storm Drain**
- 5 POA Improvement Projects**
  - a. POAVY Improvements
  - b. POL2 Improvements
  - c. Terminal Fender Work
  - d. Port Maintenance Building

# Next Week's POA Construction Work Areas

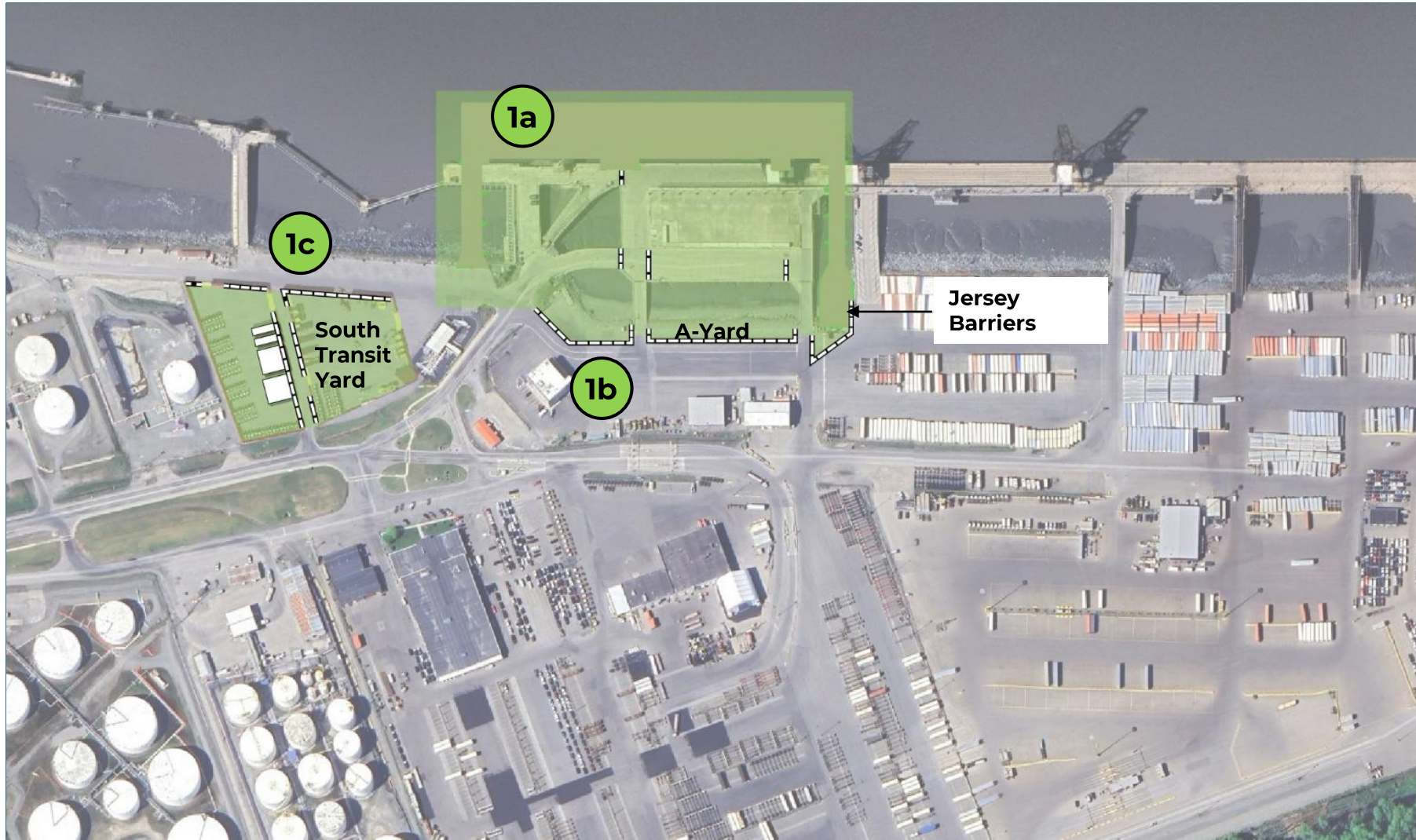


- 1 PAMP Terminal 1**
  - a. POL1 and existing Terminal 1
  - b. Landside work area
  - c. South Transit Yard
  - d. North Extension

For 4/5/2026 to 4/11/2026



# Next Week's POA Construction Work Areas



## PAMP Terminal 1

- 1a POL1 and existing Terminal 1
- 1b Landside work area
- 1c South Transit Yard

For 4/5/2026 to 4/11/2026



# This Week's POA Construction Work Areas

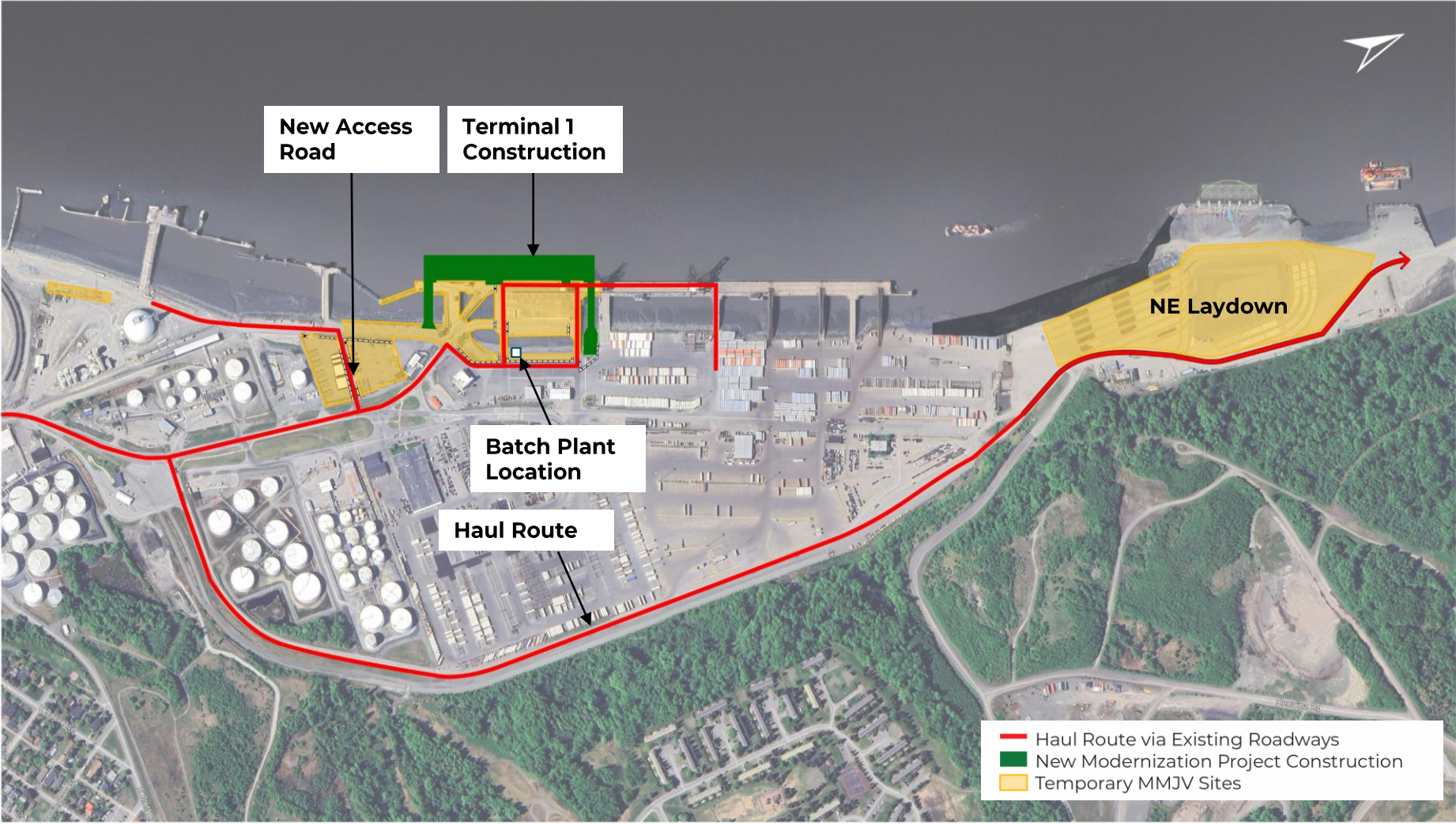


- 1e** PAMP Terminal 1
- North extension laydown yard

For 4/5/2026 to 4/11/2026



# Terminal 1 Truck Route Map



# Terminal 1 Work Activities

- Continue constructing the deep soil mixing work pad which involves both excavating, removal of the armor stone shore protection and backfill.
- Begin mobilizing the deep soil mixing equipment to the work site.
- Begin installing and commissioning the cement batch plant.
- Continue the demolition of Trestle 1a, starting with removal of existing conduit and utilities.
- Continue upgrading the West trestle to support truck traffic.



# Outages Associated with T1 Construction

- Fire hydrants on POL1 and Terminal 1 have been disconnected. The disconnected hydrants are now covered to indicate they are no longer active.
- East trestle lights have been de-energized.
- One light pole in the South Transit Yard in the construction area has been de-energized.
- Intertek building has been demolished.



# Learn more

Visit our website to learn more about PAMP  
[modernization.portofalaska.com](https://modernization.portofalaska.com)

# Questions?

Email [PortModernization@AnchorageAK.gov](mailto:PortModernization@AnchorageAK.gov)

A photograph of a port at dusk. A large ship is docked at a pier, with several cranes visible on its deck. The sky is a mix of purple, pink, and blue, and the water reflects the lights from the port. The text "Thank you" is overlaid in the center of the image.

Thank you