

Don Young Port of Alaska Modernization Program

User Group Update – April 15, 2026



Agenda

1. Terminal 1 Construction Update
2. Electrical Substation
3. North Extension Helipad Project
4. T2 Design Contract
5. Fuel Transfer Options During T1 Construction
6. Upcoming meetings



Contractor Office Trailers

- MMJV's office trailers have been setup and are operational.

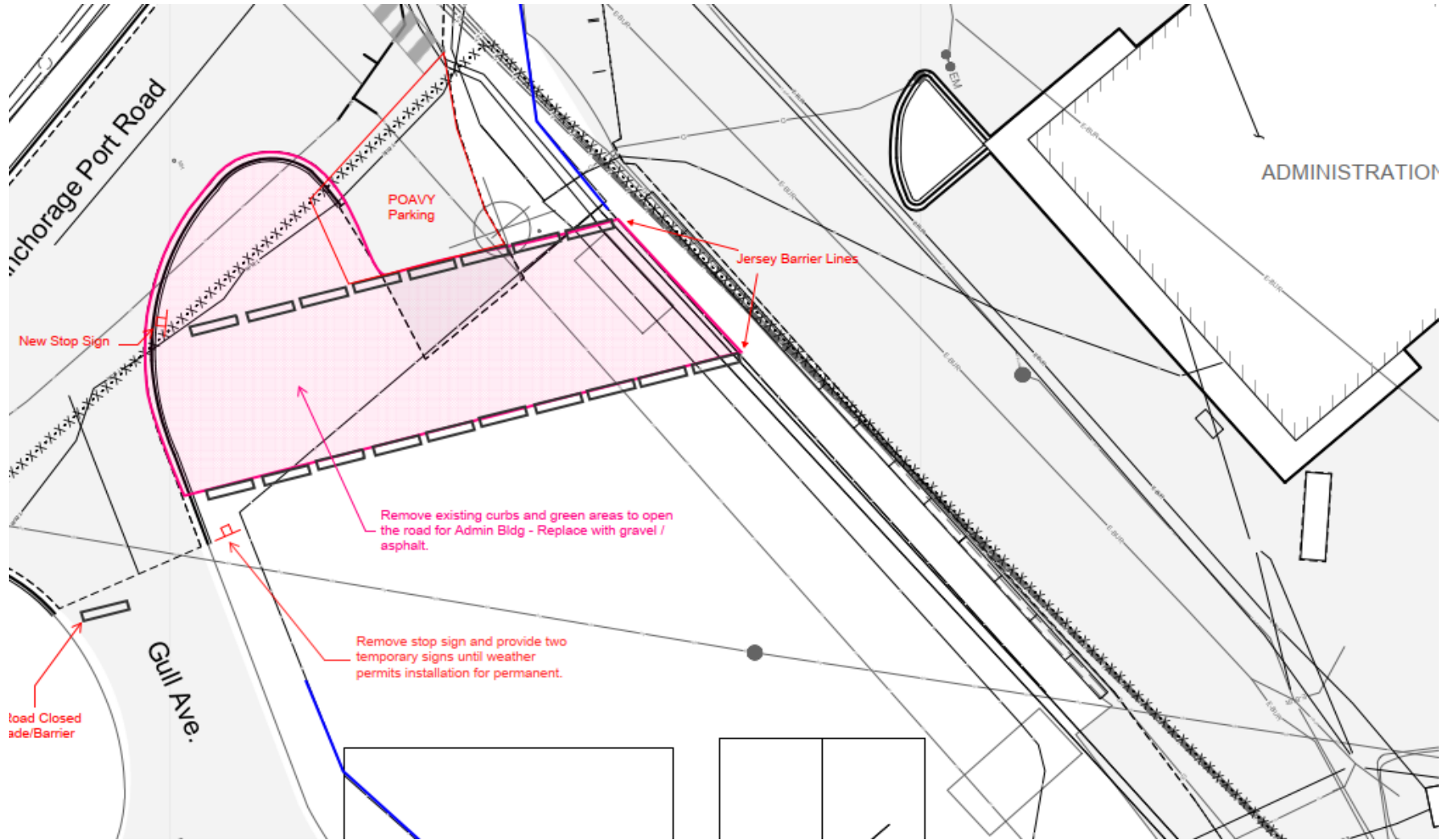


Access Change

- Access to the PCT, POL2 and South Floating Dock is now off Anchorage Port Road.



POAVY Parking and POA Admin Access



Cement Batch Plant

- MMJV has begun construction of a temporary cement batch plant across from the Administration Building. Operational by 4/20.



North Extension Material Storage

- The stockpiled material is being prepared for use in the deep soil mixing work pads.



Alexander Herbert



Deep Soil Mixing Pad. South Trestle

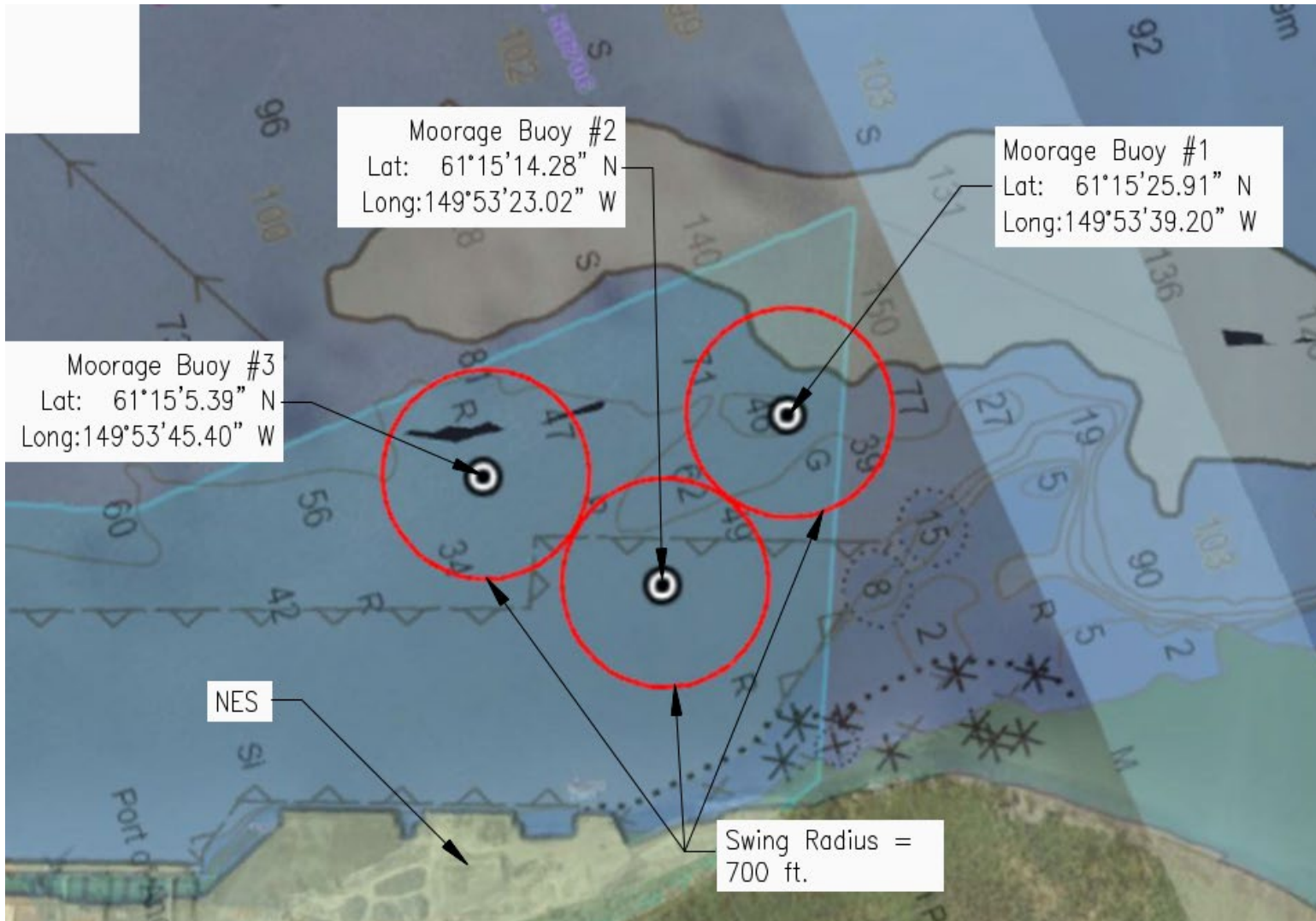


Equipment and Material begins arriving from Washington in May

- Major marine equipment begins arriving in early May.
- Piles begin arriving in early May.



Marine Buoys

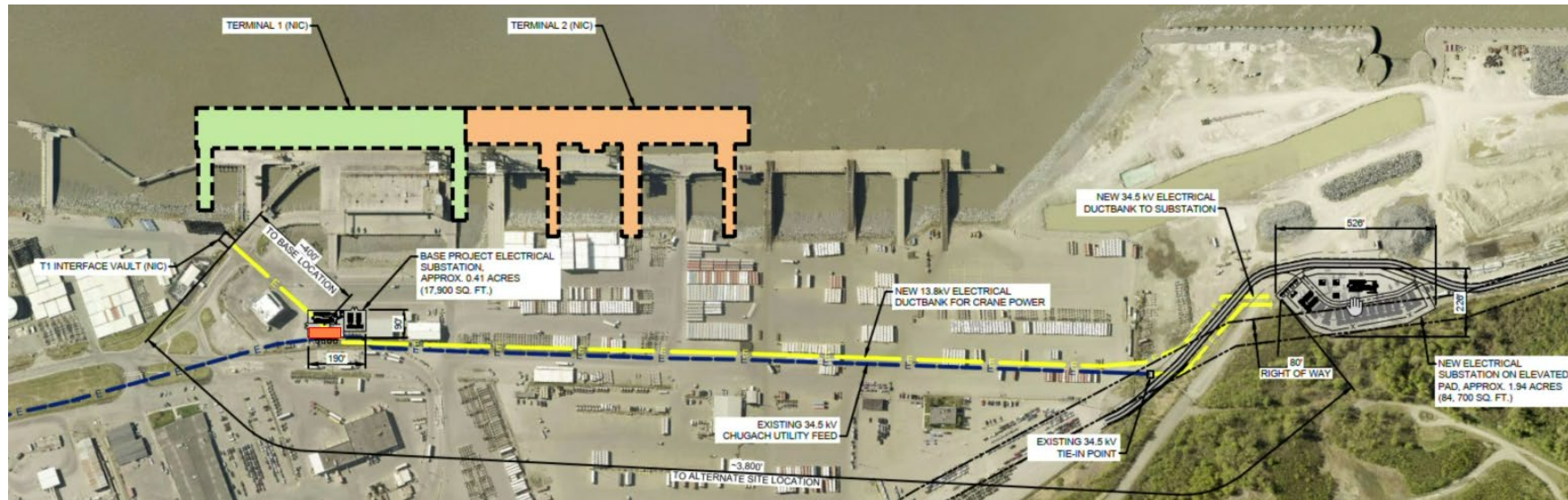


- MMJV has begun coordinating with SWAPA and TOTE pilots on moorage buoys and marine work area.
- Communication between Captains to be by Marine VHF.



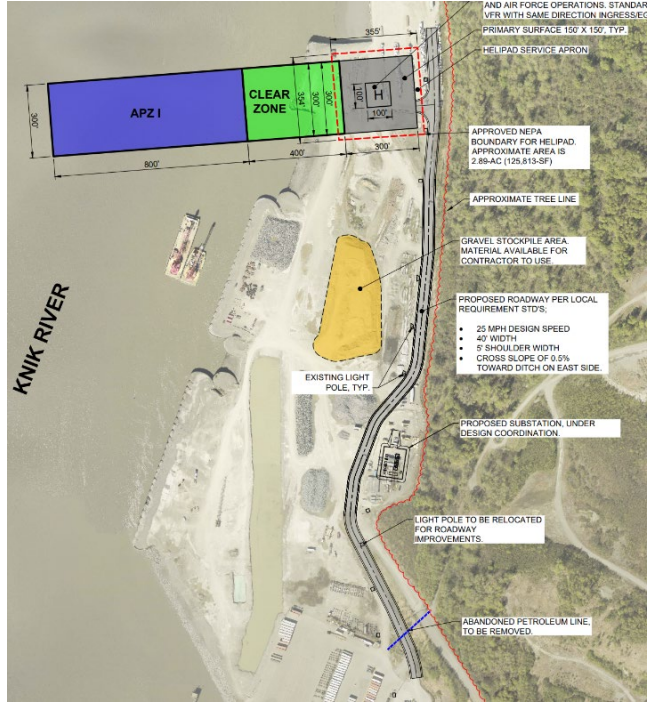
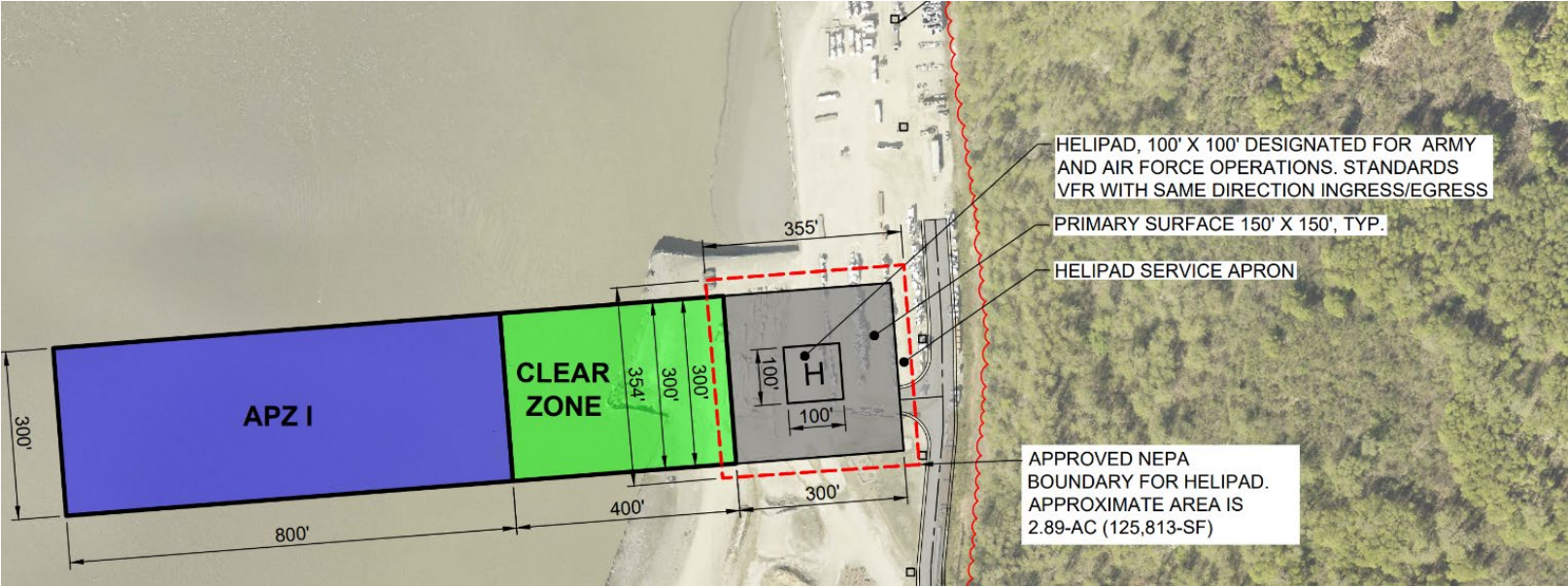
Electrical Substation Project - North Extension Location

- Construction anticipated to begin in July.
- Goal to construction duct bank this year and run cable next year.
- Currently working on the electrical design.



North Extension Helipad Project

- Planning to advertise a design build contract this month in April.



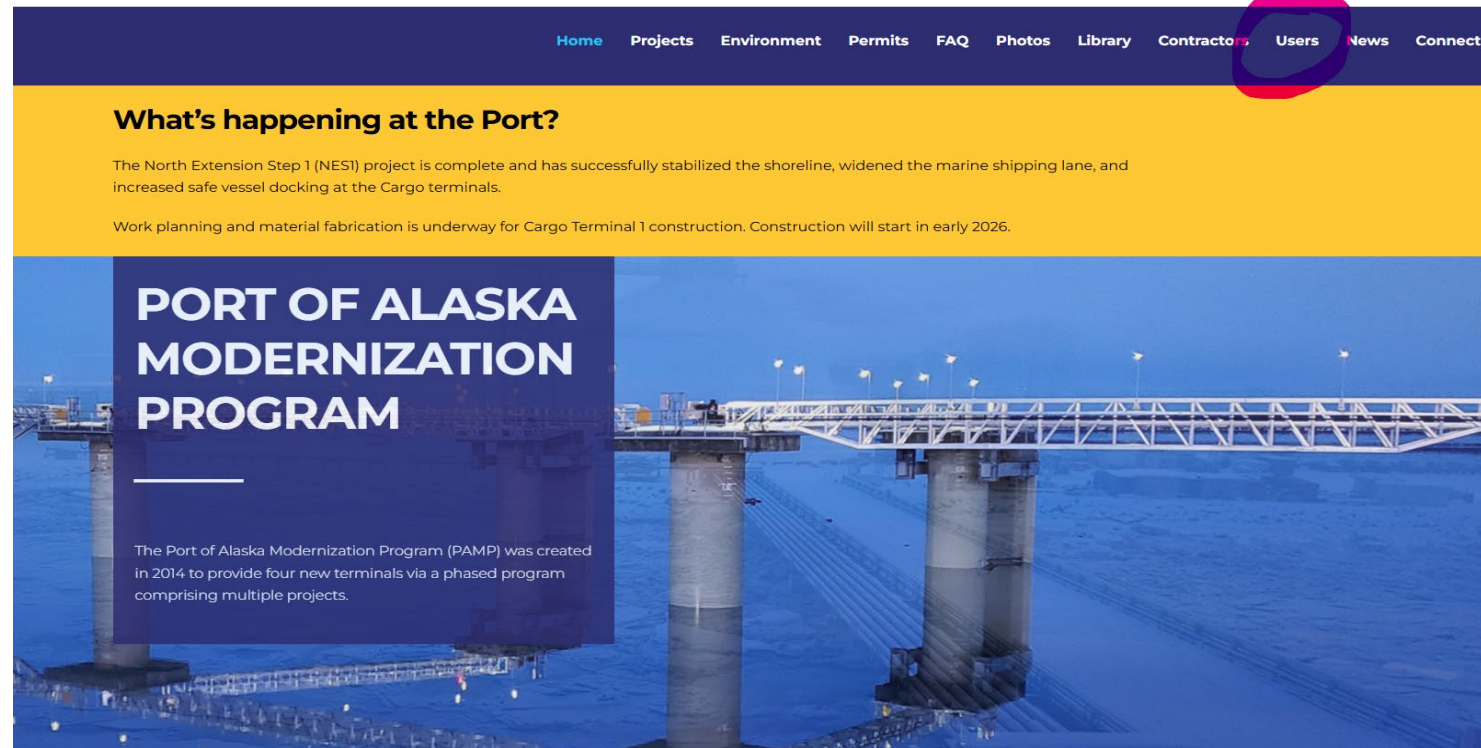
Weekly Construction Season Look Ahead Webinars

- Every week.
- Agenda includes:
 - Summary of work planned for the next week by each contractor.
 - Updated map showing work areas.
- Everyone doing business on the Port should attend.
- Invites have been sent out.
 - Please email Leanne.Rutland@jacobs.com if you would like to invite others to this webinar series.



PAMP website is being updated weekly

- Yellow banner updates.
- Weekly construction webinar presentations are added every Thursday under the Users tab.



Terminal 2 Design

- Project design is ramping up.



Fuel Transfer Operations During T1 Construction

- POL1 demolition begins May 1.
- POL2 will be dredged by USACE when ice departs in April.
- T1 contractor will perform any additional dredging necessary. On track for 4/19 arrival.
- First tanker scheduled for late May.
- POL2 line replacement project anticipated to be complete in mid-May.



Upcoming meetings

- PAB meeting
 - May 12th 10 AM
- IEUOC meeting
 - April 16
 - 2026 construction work plan
 - Upcoming POA Projects



A photograph of a shipyard at dusk. The sky is a mix of purple, pink, and blue. In the foreground, there's a body of water reflecting the lights and the sky. In the middle ground, there are several large cranes and industrial structures, some with "Matson" written on them. The background shows a dark, forested hillside. The overall scene is industrial and serene.

Thank you