

Don Young Port of Alaska Modernization Program

User Group Update – April 1, 2026



Agenda

1. Terminal 1 Construction Update
2. Electrical Substation
3. North Extension Helipad Project
4. T2 Design Contract
5. Fuel Transfer Options During T1 Construction
6. Upcoming meetings



Contractor Office Trailers

- MMJV's office trailers have been setup and are operational.



Construction Area Reconfiguration

- Jersey barriers have been placed to delineate work areas.



Alexander Herlant



Access Change

- Access to the POAVY, PCT, POL2 and South Floating Dock is now off Anchorage Port Road.



Cement Batch Plant

- MMJV has begun construction of a temporary cement batch plant across from the Administration Building.
- Materials from this plant are required by contract to be confined to the working area.



North Extension Material Storage

- The stockpiled material is being prepared for use in the deep soil mixing work pads.

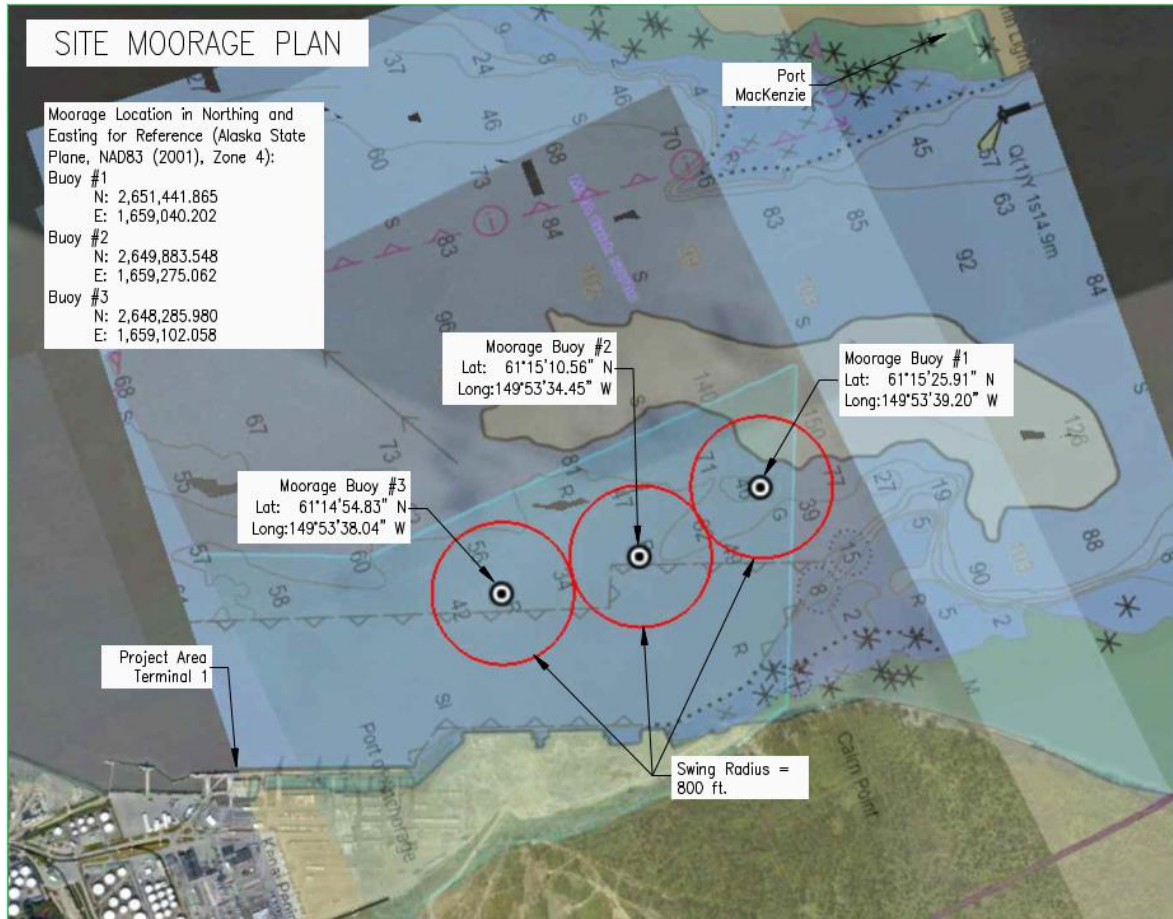


Equipment and Material begins arriving from Washing later in May

- Major marine equipment begins arriving in early May.
- Piles begin arriving in early May.



Marine Work



GENERAL NOTES

- Moorages 1, 2 and 3 are all within the Port of Alaska's lease land.
- Buoy #1 is located at:
 - Lat: 61°15'25.91" N
 - Long: 149°53'39.20" W
 - Swing Radius = 800 ft.
- Buoy #2 is located at:
 - Lat: 61°15'10.56" N
 - Long: 149°53'34.45" W
 - Swing Radius = 800 ft.
- Buoy #3 is located at:
 - Lat: 61°14'54.83" N
 - Long: 149°53'38.04" W
 - Swing Radius = 800 ft.
- Typical Mooring Hardware/Setup:
 - 2 ea. 20,000 lb Danforth or Navy Stockless Anchors in a Piggy Back Configuration.
 - 3 shots (90' Length ea. for a total of 270') of 2" (or bigger) Grade 3 Stud Link Chain.
 - Anchor Chain Swivel, Grade 3, 2" or bigger.
 - Mooring Buoy - Flat top with tapered bottom so it floats flat for easy access.
 - Mooring Rope Assembly: 2" dia. x 60ft w/ chafed 3ft eye end & thimble eye other end.
 - Kenter Link & Pear Link chain connectors to assemble everything.

Site Moorage Plan

POA Modernization Program
Construction Services for
Terminal 1 Replacement

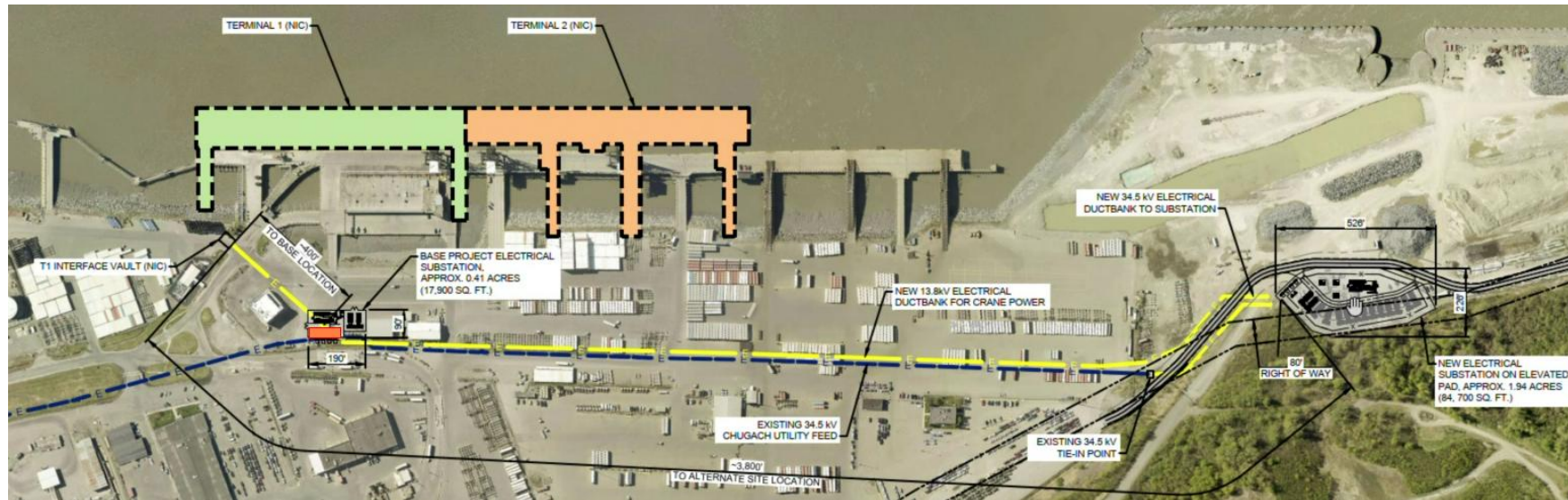
Drawn	Mooring Buoy's	Rev.	
		-	
	Scale	Noted	
	Drawn by	ERD	-
	Checked by	ASP	-

- Marine work planned to begin May 1.
- MMJV has begun coordinating with SWAPA and TOTE pilots on moorage buoys and marine work area.



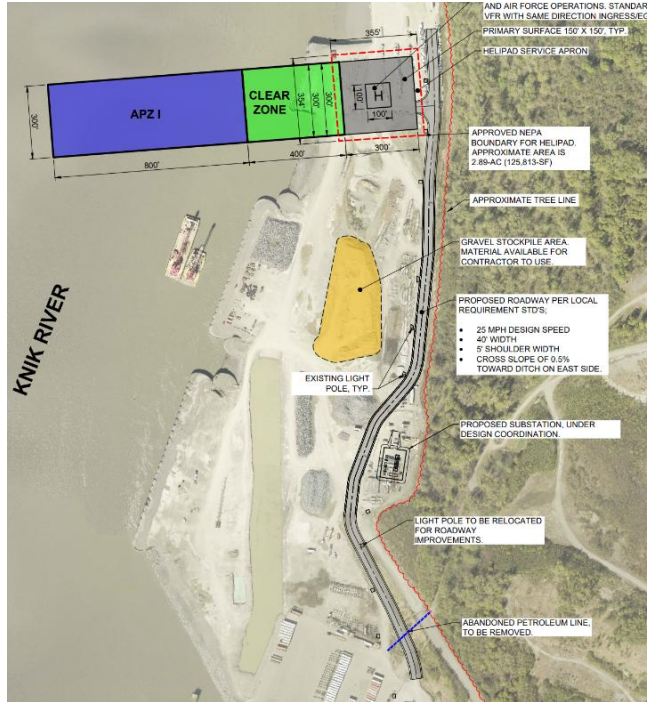
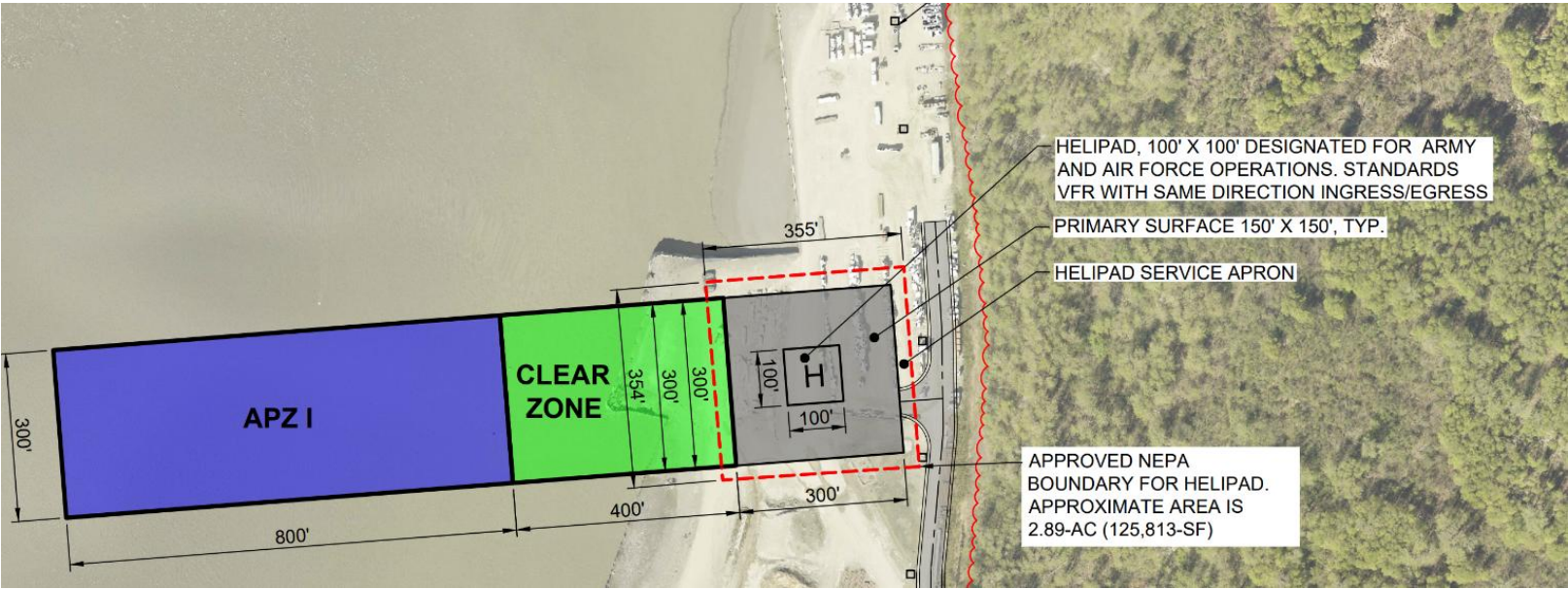
Electrical Substation Project - North Extension Location

- Construction anticipated to begin in July.
- Goal to construction duct bank this year and run cable next year.
- Currently working on the electrical design.



North Extension Helipad Project

- Planning to advertise a design build contract this month. Construction still planned for 2026.



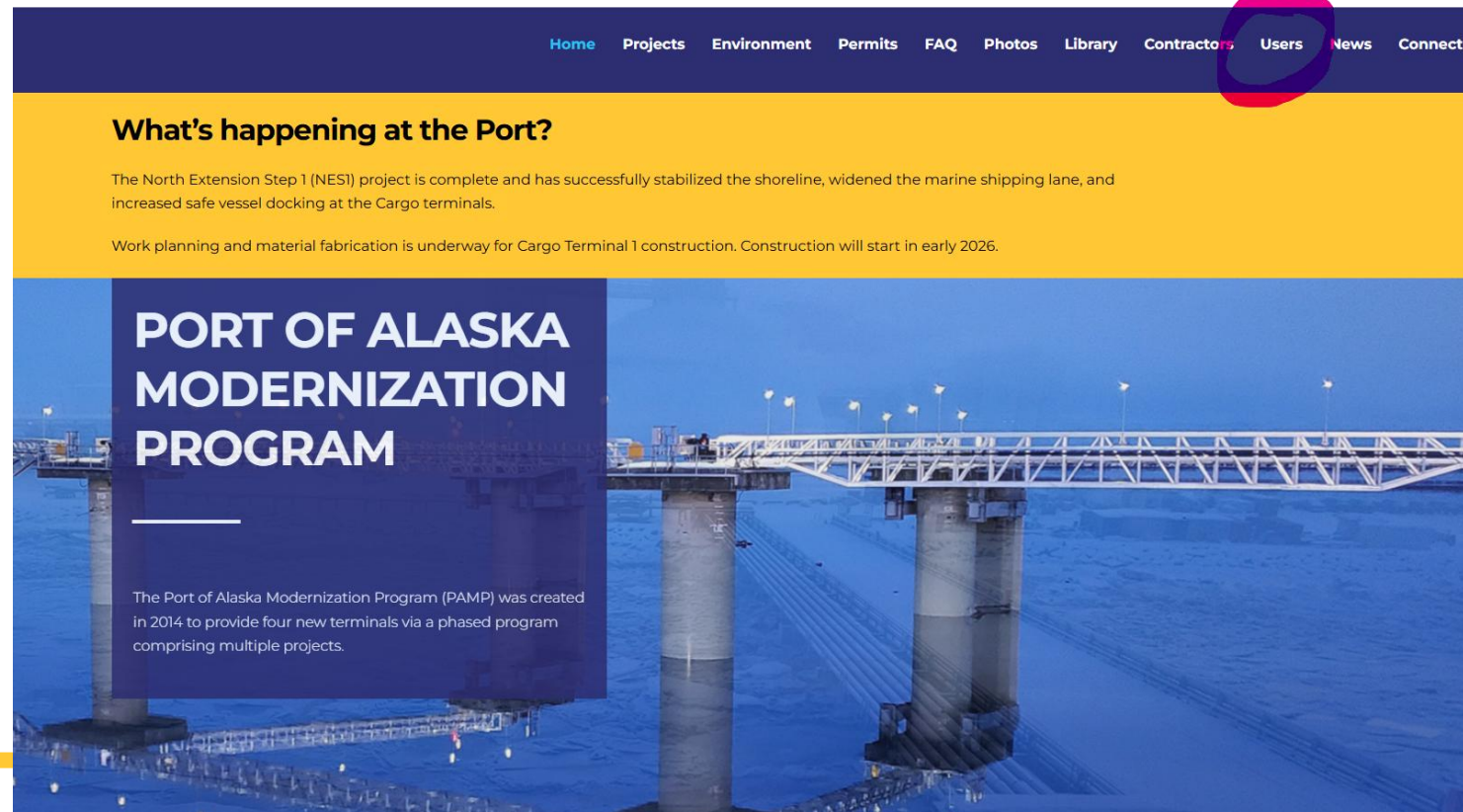
Weekly Construction Season Look Ahead Webinars

- Began last week.
- Agenda includes:
 - Summary of work planned for the next week by each contractor.
 - Updated map showing work areas.
- Everyone doing business on the Port should attend.
- Invites have been sent out.
 - Please email Leanne.Rutland@jacobs.com if you would like to invite others to this webinar series.



PAMP website is being updated weekly

- Yellow banner updates.
- Weekly construction webinar presentations are added every Thursday under the Users tab.



Terminal 2 Design

- Kickoff held.
- Project design is ramping up.
- 35% due in September 2026.



Fuel Transfer Operations During T1 Construction

- POL1 demolition begins May 1.
- POL2 will be dredged by USACE when ice departs in April.
- T1 contractor will perform any additional dredging necessary.
- First tanker scheduled for late May.
- POL2 line replacement project anticipated to be complete in mid-May.



Upcoming meetings

- PAB meeting
 - May 12th 10 AM
- IEUOC meeting
 - April 16
 - 2026 construction work plan



A photograph of a Matson shipping yard at dusk. The scene is illuminated by the soft, pink and purple light of the twilight sky. In the foreground, a large body of water reflects the sky and the lights from the yard. The yard itself is filled with various pieces of equipment, including cranes and large containers, many of which have the Matson logo on them. The background shows a dark, forested hillside under the fading light. The overall mood is serene and professional.

Thank you