

Don Young Port of Alaska Modernization Program

User Group Update – January 7 2026



Agenda

1. Terminal 1 Update
2. Substation and BESS
3. North Extension Helipad project
4. T2 Design Contract
5. Fuel transfer options during the new PT construction
6. Upcoming meetings



Terminal 1 Construction

- MARAD FONSI completed
- Contractor is working to finalize their construction workplan
- Precast element fabrication has ongoing
- Pile fabrication continues, first barge has been loaded and will be stored in Washington before transport to Alaska in the spring
- Construction work begins in March 2026



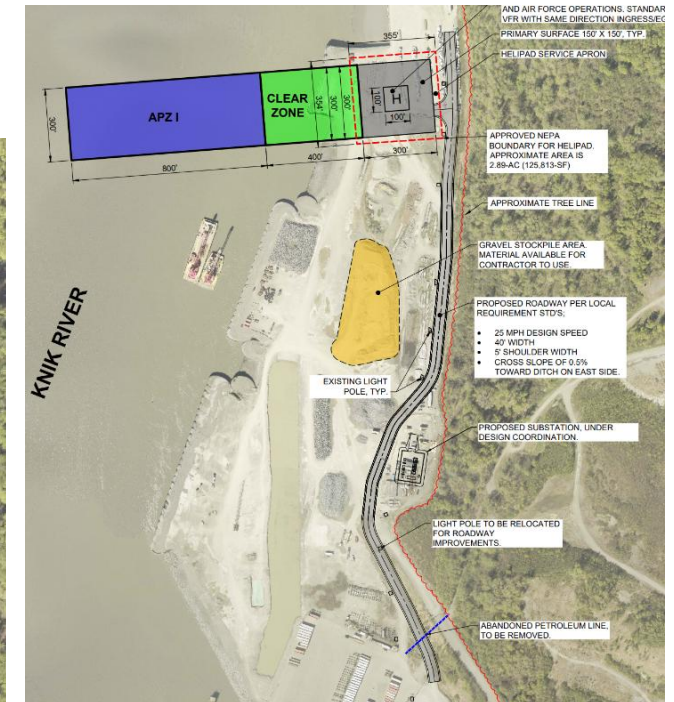
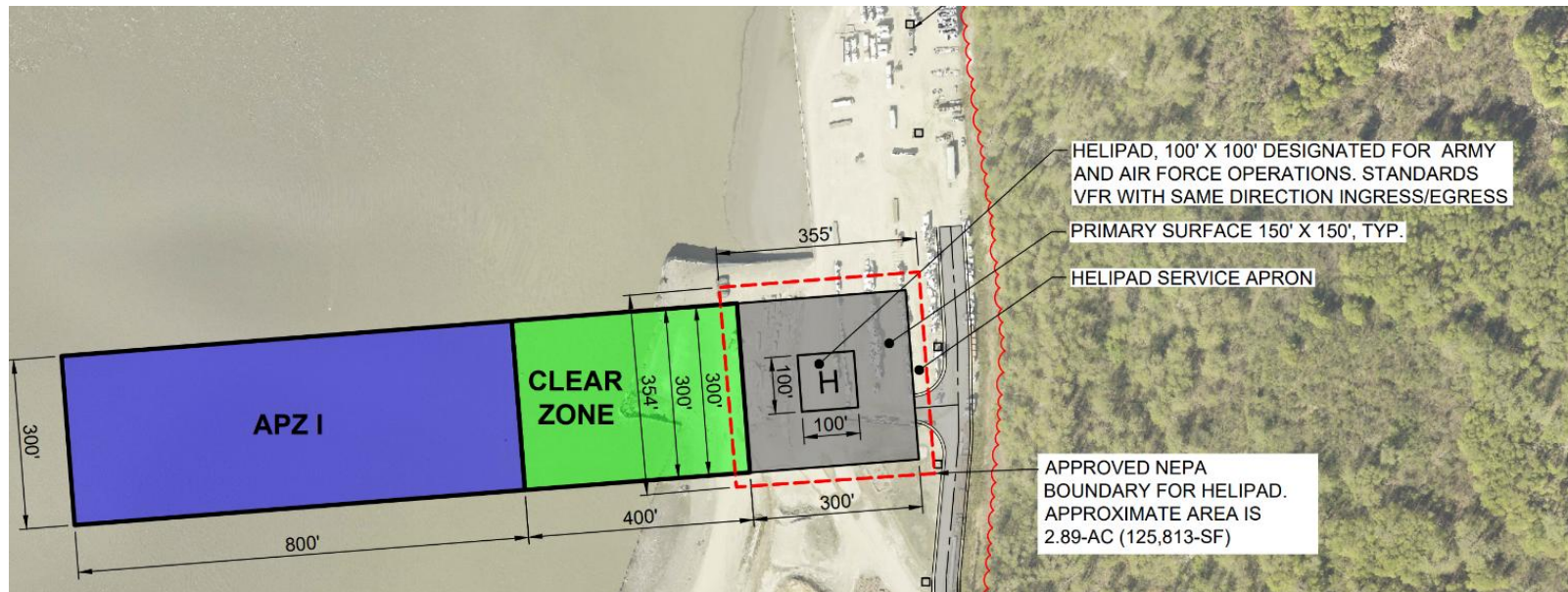
Substation and BESS

- PAB voted in favor of move
- Will be presented at IEUOC meeting January 15th
- Geotechnical engineering for site is underway and will see drill equipment.



North Extension Helipad Project

- PAB voted to add project to PAMP
- Planning to advertise a design build contract with construction 2026
- Will be paid for with the NES1 grant funding



Terminal 2 Design Contract

- Design Awarded to COWI
- Expected Kickoff February



Fuel Transfer Operations During PT Construction

- The T2 Design contractor will evaluate the feasibility of fuel points on T1, T2 and relocating the planned PT to the north of existing cargo terminals



Upcoming Public meetings

- Jan 13th Assembly meeting:
 - AM for Helipad: Will be deferred to Jan 23rd meeting
 - AM for Substation move: Will be deferred to Jan 23rd meeting
- Jan 15th IEUOC meeting:
 - Helipad
 - Substation
 - CO Authority increase
- Jan 23rd Assembly meeting for approval
 - See above items



A photograph of a port at dusk. A large ship is docked at a pier, with several cranes visible on its deck. The ship's lights are on, and the lights from the pier and surrounding area are reflected in the water. The sky is a mix of purple, pink, and blue, indicating the time is either dawn or dusk. The background shows a snowy hillside and some buildings. The text "Thank you" is overlaid in the center of the image.

Thank you