

Don Young Port of Alaska Modernization Program

User Group Update – December 9 2025



Agenda

1. Relieving platform on the North Extension
2. North Extension Helipad project
3. Terminal 1 Construction project update
4. Electrical Substation Siting
5. Petroleum Cement Terminal – Fuel operations
6. T2 Design Contract award
7. Fuel transfer options during the new PT construction



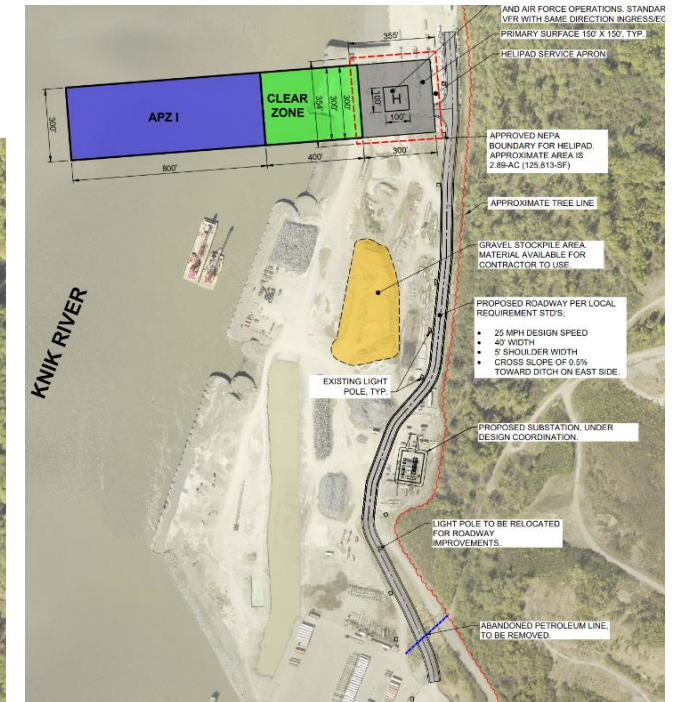
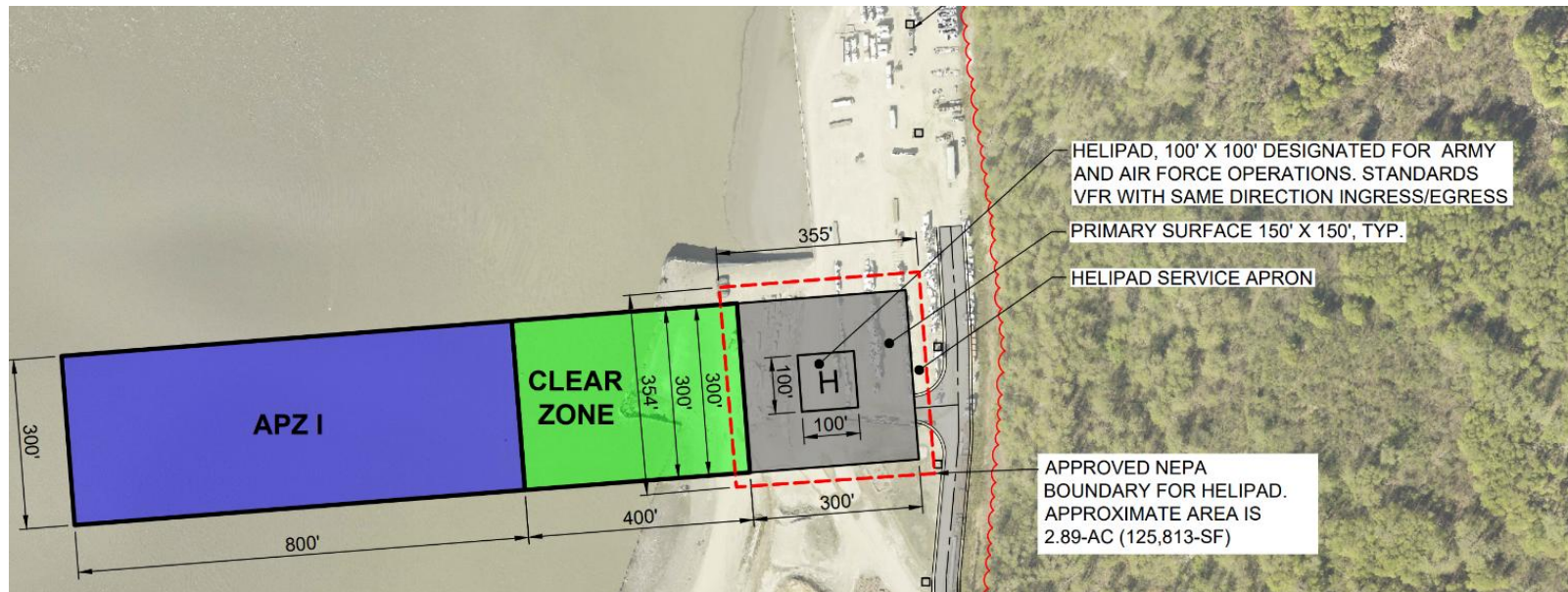
Relieving Platform at North Extension

- Pile-supported concrete pad constructed for off-loading heavy materials
- Crane has been stationed at the pad
- MMJV will use this pad to off-load some of the Terminal 1 piles beginning in Spring 2026



North Extension Helipad Project

- Purpose is to relieve existing space constraints on the Port for military mobilizations
- Consists of a helipad and access road
- Planning to advertise a design build contract with construction 2026
- Will be paid for with the NESI grant funding



Terminal 1 Construction

- Anticipate MARAD FONSI end of December
- Contractor is working with Matson to finalize their construction workplan
- Precast element fabrication has begun
- Pile fabrication continues, first barge has been loaded and will be stored in Washington before transport to Alaska in the spring
- Construction work begins in March 2026



Electrical Substation Alternative Site

- POA is considering two location options.
- Alternate site frees up valuable space near the terminals.
- Will be presented to the PAB in January 2026.



PCT Fuel Operations

- First vessel came in today
- Minor projects are largely complete



Terminal 2 Design Contract



Terminal 2 Design Key Deliverables


- Evaluation of reduced seismic performance criteria
 - Concept level comparative cost estimates
 - Description of anticipated structural damage during design seismic event
 - Description of the anticipated operability of the structure after design seismic event
 - Proposed inspection and test plans for post design seismic event
- 35% Design per approved Assembly AO No. 2024-103



Fuel Transfer Operations During PT Construction

- The T2 Design contractor will evaluate the feasibility of fuel points on T1, T2 and relocating the planned PT to the north of existing cargo terminals
- Discussions with ABI regarding new docksider will continue



A scenic view of a port at dusk. The sky is a mix of purple, pink, and blue. In the foreground, the calm water reflects the colors of the sky and the lights from the port. Several large cranes are visible on the docks, and a few ships are moored. The overall atmosphere is peaceful and reflective.

Thank you for a great
2025. Last update of the
year.