

# Don Young Port of Alaska Modernization Program

User Group Update – November 12 2025



# Agenda

1. NES1 project update
2. Relieving platform on the North Extension
3. North Extension Helipad project
4. Terminal 1 Construction project update
5. T1 Geotechnical Boreholes
6. Electrical Substation Siting
7. Petroleum Cement Terminal – Fuel operations
8. Fuel transfer options during the new PT construction



# North Extension Stabilization Step 1

- Substantial completion achieved
- Permits are being closed out
- Closeout in progress



*Alexander Horlant*



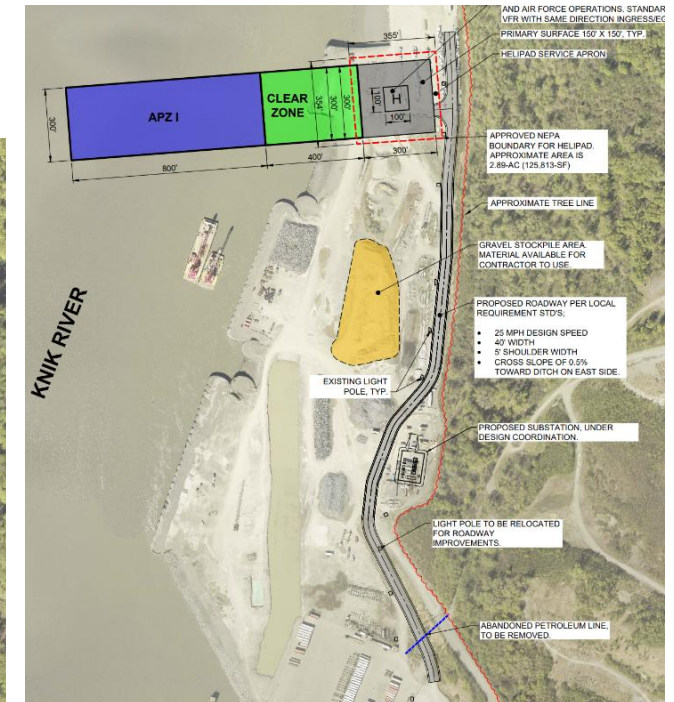
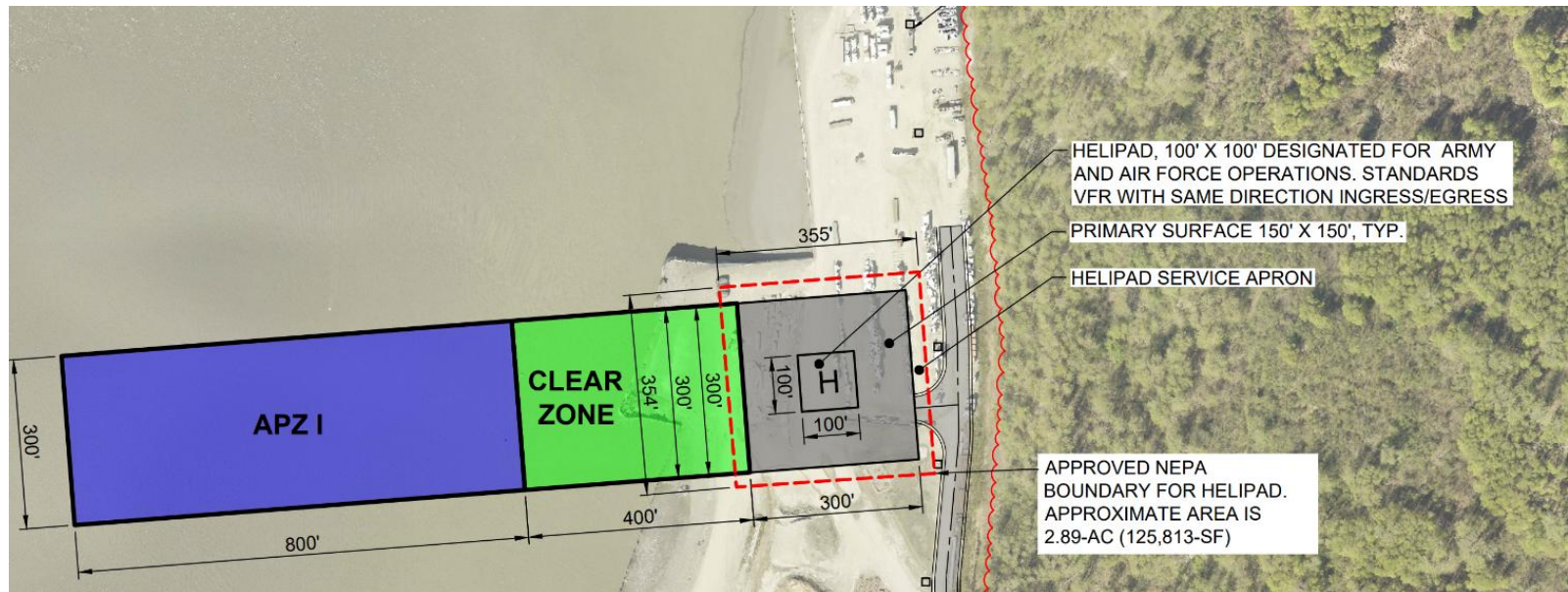
# Relieving Platform at North Extension

- Pile-supported concrete pad constructed for off-loading heavy materials
- Crane is currently being erected and should be done over the next week.
- MMJV will use this pad to off-load some of the Terminal 1 piles



# North Extension Helipad Project

- Purpose is to relieve existing space constraints on the Port for military mobilizations
- Consists of a helipad and access road
- Planning to advertise a design build contract next month with construction this spring
- Will be paid for with the NESI grant funding



# Terminal 1 Construction

- Anticipate MARAD FONSI end of December. Possible delay due to federal government shut-down.
- Precast element fabrication begins soon
- Construction work begins in March 2026.



# T1 – Geotechnical Explorations

- Additional work to support ground improvement detailed design for Trestles 1A and 1B
- Anticipated to result in cost savings to the ground improvement work
- Contractor began work on Friday 10/24
- Complete this week



# Electrical Substation Alternative Site

- POA is considering two location options.
- Alternate site frees up valuable space near the terminals.
- Decision expected in January 2026.



# PCT Fuel Operations

- Minor projects are in progress
- Working towards a first fuel vessel as soon as possible



# Fuel Transfer Operations During PT Construction

- Currently compiling and updating technical information for evaluation of all options.



A photograph of a port at dusk. A large ship is docked at a pier, with several cranes visible on its deck. The ship's lights are on, and the lights from the pier are reflected in the water. The sky is a mix of purple, pink, and blue. The background shows a snowy hillside with some trees. The text "Thank you" is overlaid in the center of the image.

# Thank you