

# Don Young Port of Alaska Modernization Program

User Group Update – October 29 2025



# Agenda

1. NES1 project update
2. Relieving platform on the North Extension
3. Terminal 1 Construction project update
4. T1 Geotechnical Boreholes
5. Electrical Substation Siting
6. Ship Pilot Training
7. Petroleum Cement Terminal – Fuel operations
8. Fuel transfer options during the new PT construction





# North Extension Stabilization Step 1

- Completing final inspections and surveys
- Permits are being closed out



# Relieving Platform at North Extension



- Pile-supported concrete pad constructed for off-loading heavy materials
- Being construction now and scheduled to be complete this winter
- North Star crane will be walked through the Port to NES1 on Wed 11/5
- MMJV will use this pad to off-load some of the Terminal 1 piles





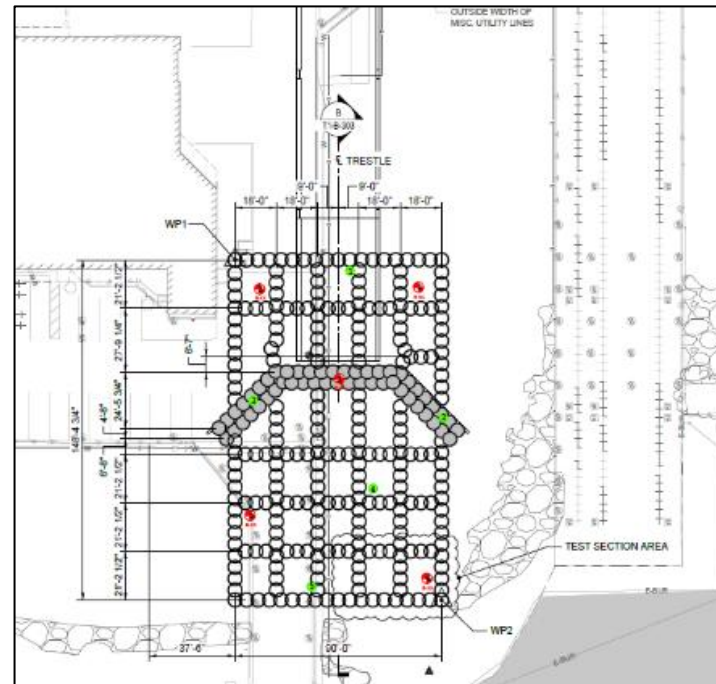
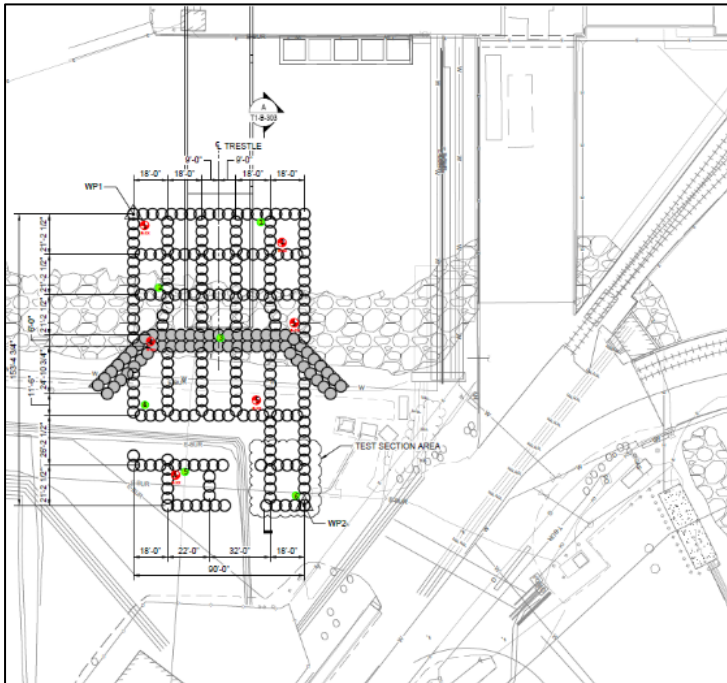
# Terminal 1 Construction

- Anticipate MARAD FONSI end of December. Possible delay due to federal government shut-down.
- All major procurement agreements are in place.
- Steel pile fabrication began in late July and is now ramping up.
- Precast element fabrication begins next month.
- Construction work begins in March 2026.



# T1 – Geotechnical Explorations

- Additional work to support ground improvement detailed design for Trestles 1A and 1B
- Contractor began work on Friday 10/24
- Anticipate 3 week duration



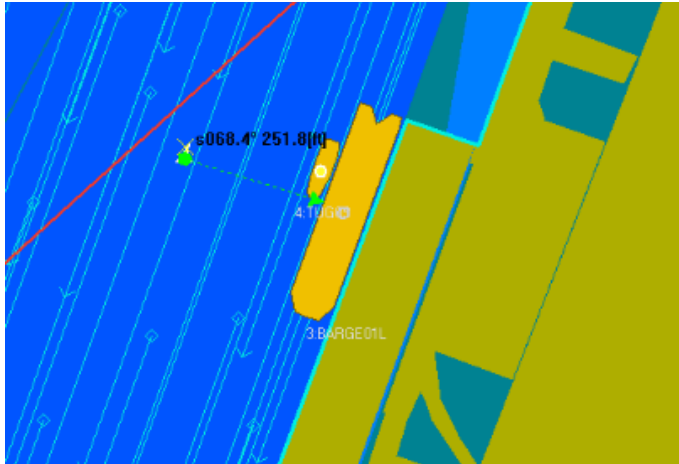
# Electrical Substation Alternative Site

- POA is considering two location options.
- Decision expected in January 2026.





# Ship Pilot Training



- The Port is providing ship pilot training to pilots who will land Matson's vessels.
- Training will include both phases of Terminal 1 construction.
  - Phase 1: Landing at the current shortened dock during construction of the majority of Terminal 1 during Phase 2.
  - Phase 2: Landing at the partially completed new Terminal 1 during construction of the final portion of new Terminal 1.
- Two sessions will be held at marine training facility in Texas (October and November)





# PCT Fuel Operations

- Minor projects are in progress
- Port is meeting with the fuel users and ABI weekly
- Working towards a first fuel vessel as soon as possible



# Fuel Transfer Operations During PT Construction

- Currently compiling and updating technical information for evaluation of all options.





A photograph of a port at dusk. A large ship is docked at a pier, with several cranes visible on its deck. The ship's lights are on, and the lights from the pier and surrounding area are reflected in the water. The sky is a mix of purple, pink, and blue, indicating the time is either dawn or dusk. The background shows a snowy hillside and some buildings. The text "Thank you" is overlaid in the center of the image.

# Thank you