

Don Young Port of Alaska Modernization Program

User Group Update – September 3 2025



Agenda

1. NES1 project update
2. Terminal 1 Construction project update
3. Petroleum Cement Terminal – Fuel operations
4. POL2 condition assessment
5. Fuel transfer options during the new PT construction



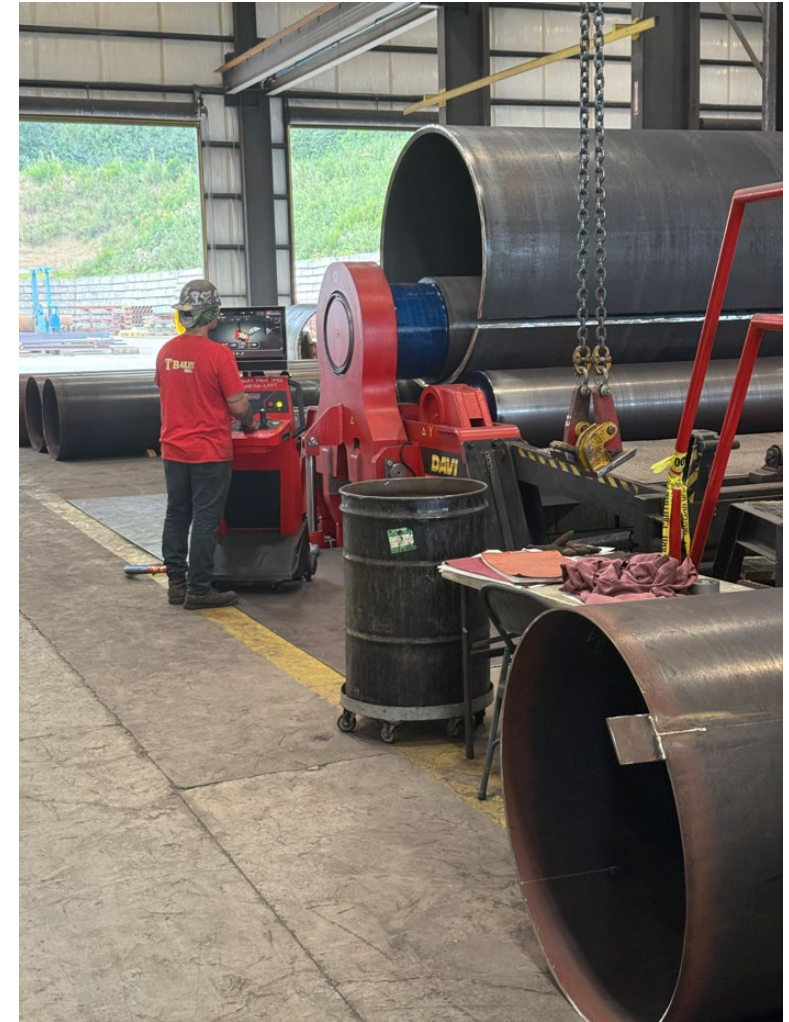
North Extension Stabilization Step 1

- Marine dredging is now complete.
- Completing shoreline revetment using the stockpile armor rock
- Still expect project completion in October 2025



Terminal 1 Construction

- All permitting on still track for end of year completion
- Meeting with MARAD Environmental to review EA on September 16
- Construction work begins in March 2026



Pile Fabrication – Anacortes, WA

- Fabrication of 160 72-inch diameter piles began in Washington
- Two-inch this plate steel is transported by rail from Reddington, Kentucky and is then rolled into 10-foot sections in Anacortes, WA



Pile Fabrication – Anacortes, WA

- Rolled sections are then welded together and coated



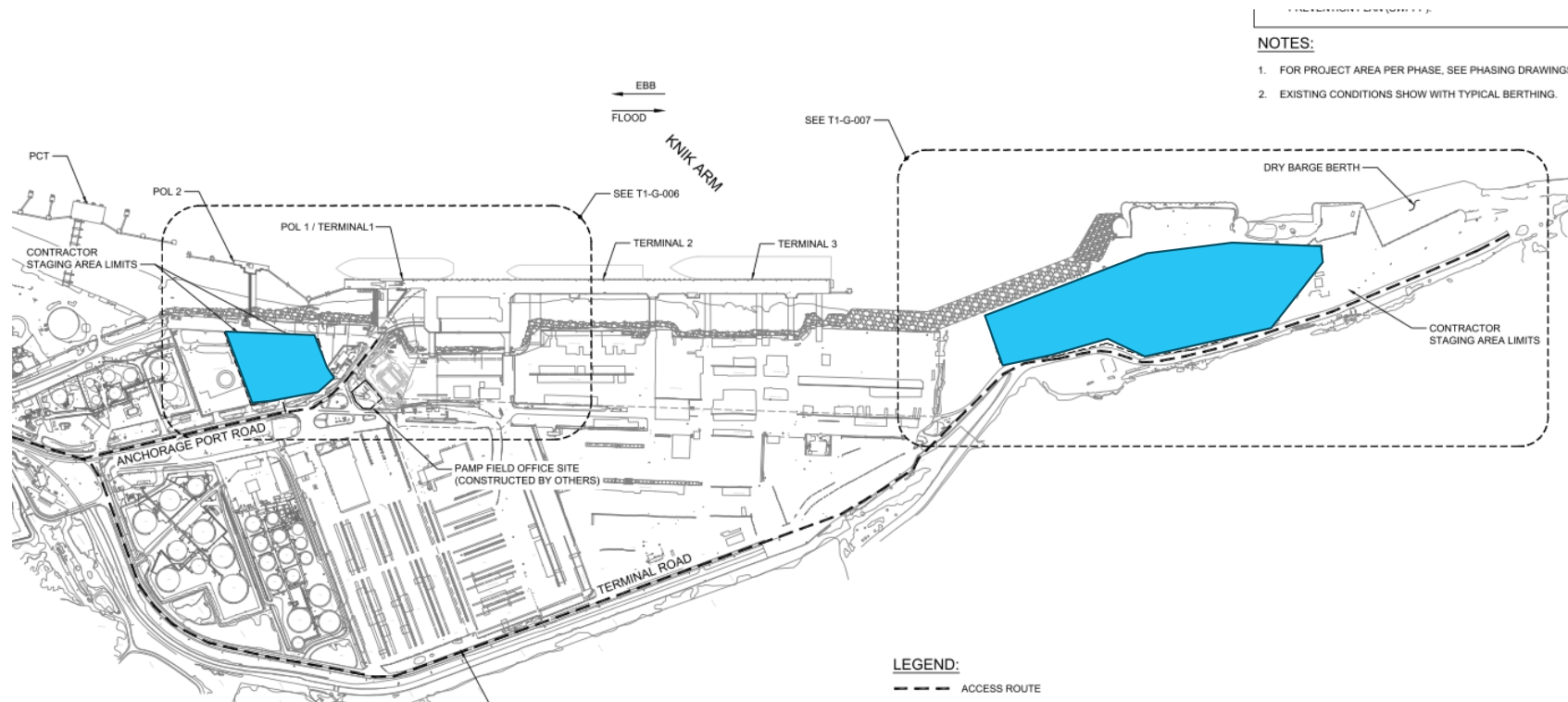
Pile Fabrication – Anacortes, WA

- One-inch thick sections are fabricated in Houston, Texas and then trucked to Anacortes, Washington.
- Sections are then trucked to the Port of Anacortes for one final weld prior to loading onto a barge for transport to Anchorage.



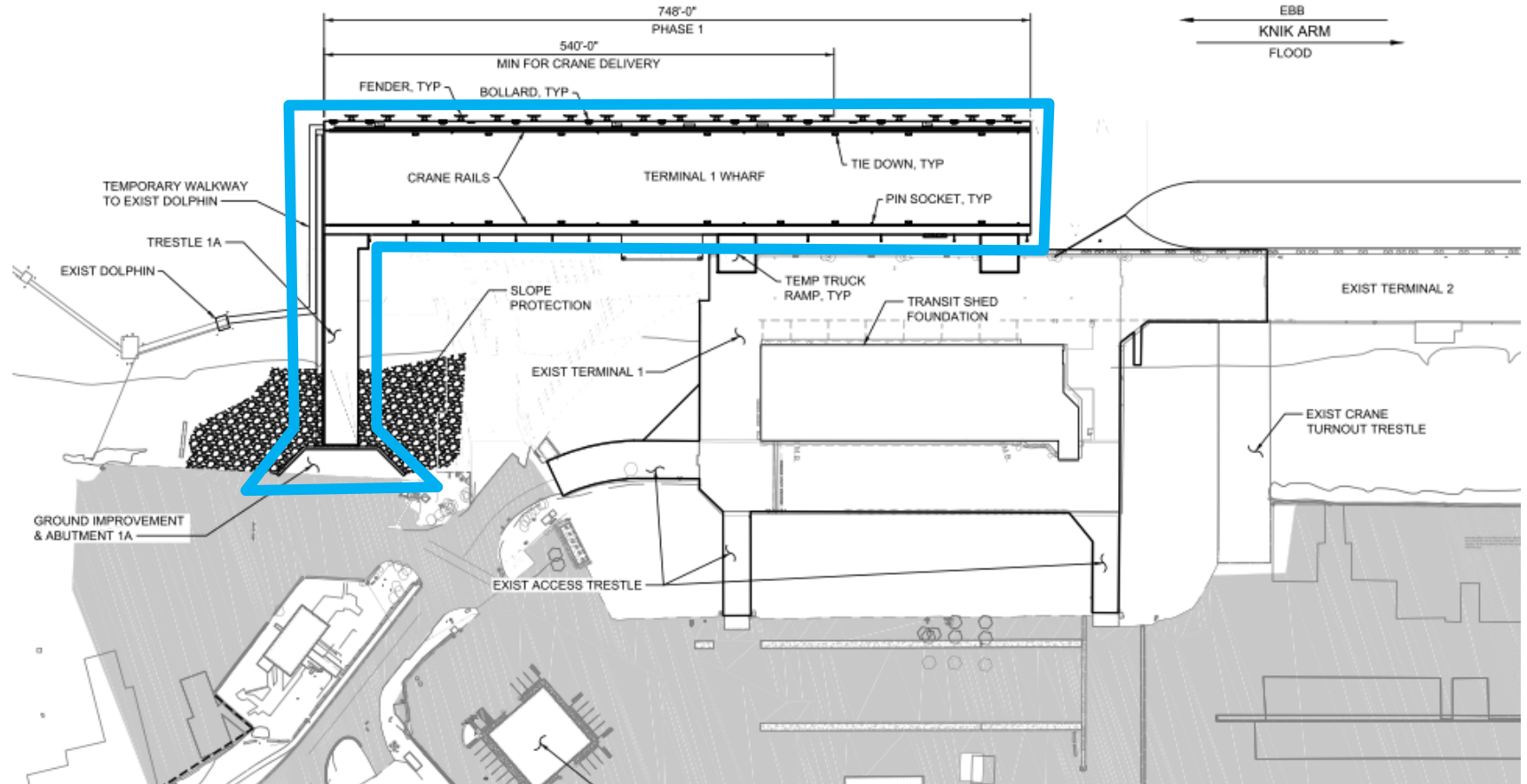
Terminal 1 Construction

- Construction Notice to Proceed on March 15, 2026
- Expect 100 – 150 workers on-site
- Contractor will take over access to designated areas on the Port



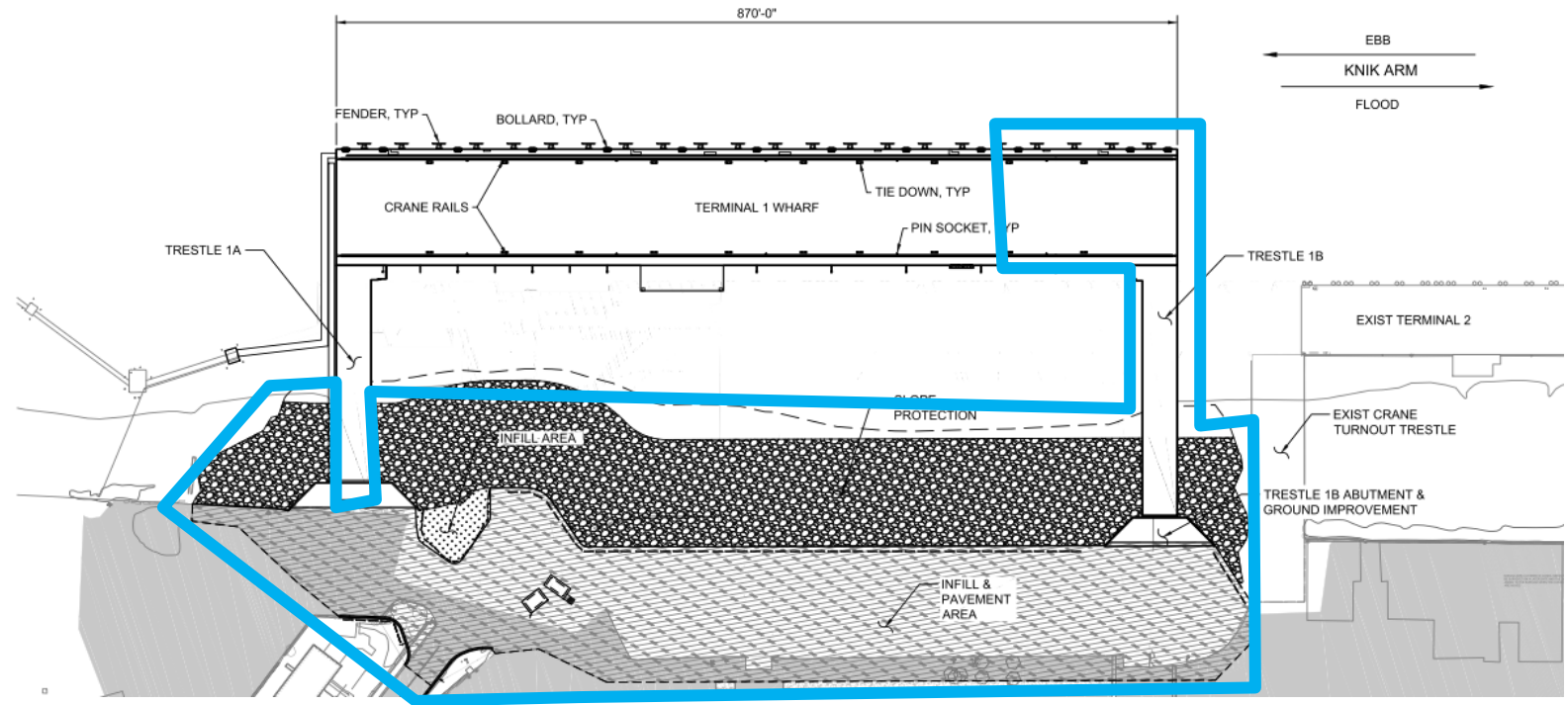
Phase 1: 2026 through 2028

- 748-foot wharf, including utilities
- Trestle 1A and abutment
- Trestle 1A ground improvement
- Temporary access
- Receive gantry cranes fall 2028

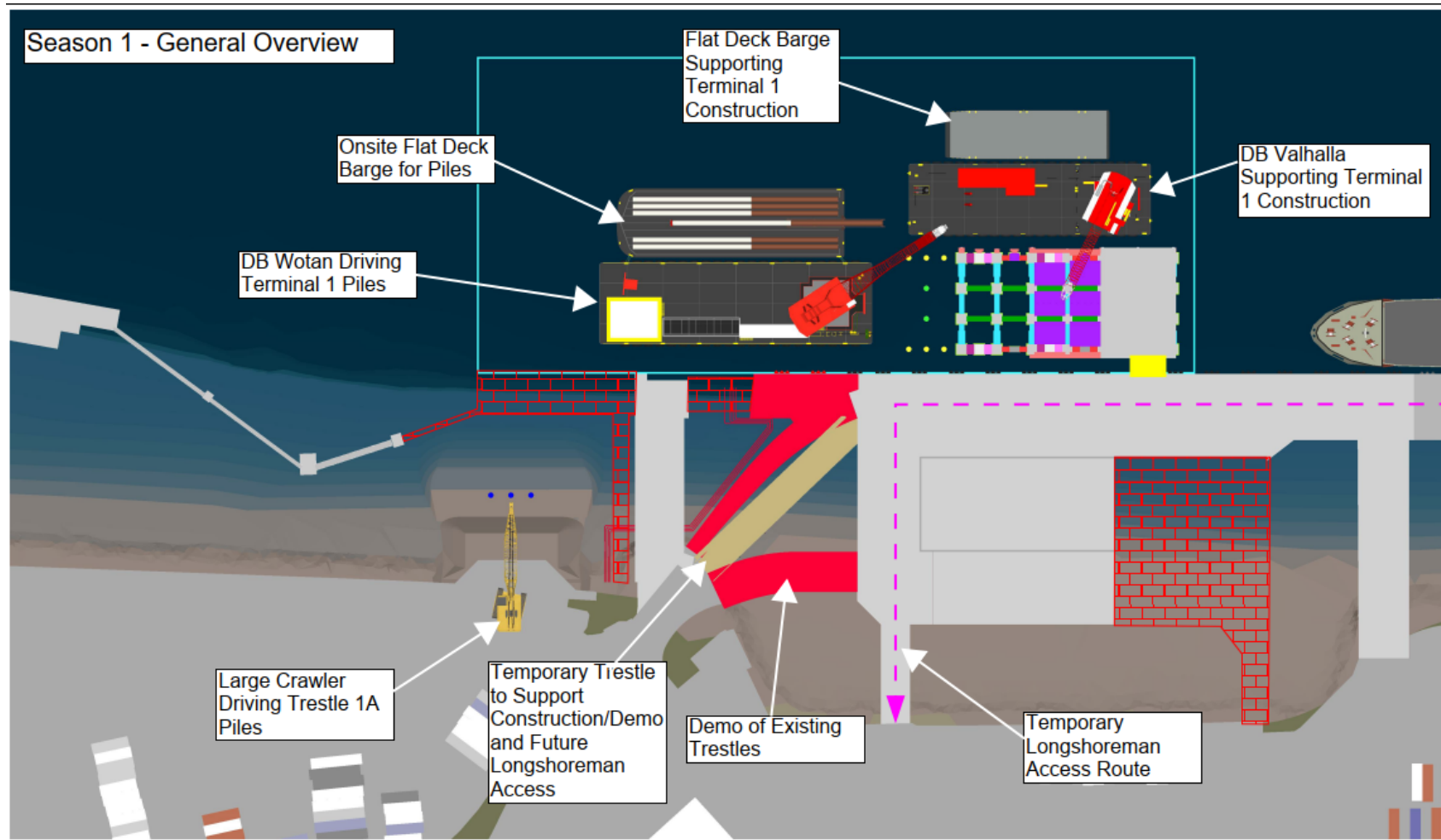


Phase 2: 2029

- Finish wharf to 870 feet
- Trestle 1B and abutment
- Trestle 1B ground improvement
- Shoreline infill and protection
- Complete demolition



2026 Construction



- Construct middle section of new T1 wharf
- Demo portions of POL1 and existing T1
- Construct temporary trestles for longshoreman and construction access



PCT Fuel Operations

- Minor projects are in progress
 - List work that needs to be done
- Port is meeting with the fuel users and ABI weekly



POL2 Condition Assessment

1. Conduct a comprehensive condition assessment of the wharf and trestle structures this fall.
2. Create cost estimates for the repair work needed to keep the dock operational until its scheduled replacement.



Fuel Transfer Operations During PT Construction

1. Currently working with ABI to estimate a new faster rate docksider
2. Plan to talk with users individually over the next few months



A photograph of a shipyard at dusk. The sky is a mix of purple, pink, and blue. In the foreground, a body of water reflects the lights from the shipyard. Several large cranes are visible, some with 'Matson' written on them. The shipyard is illuminated by various lights, and the surrounding area is covered in snow. The text 'Thank you' is overlaid in the center of the image.

Thank you